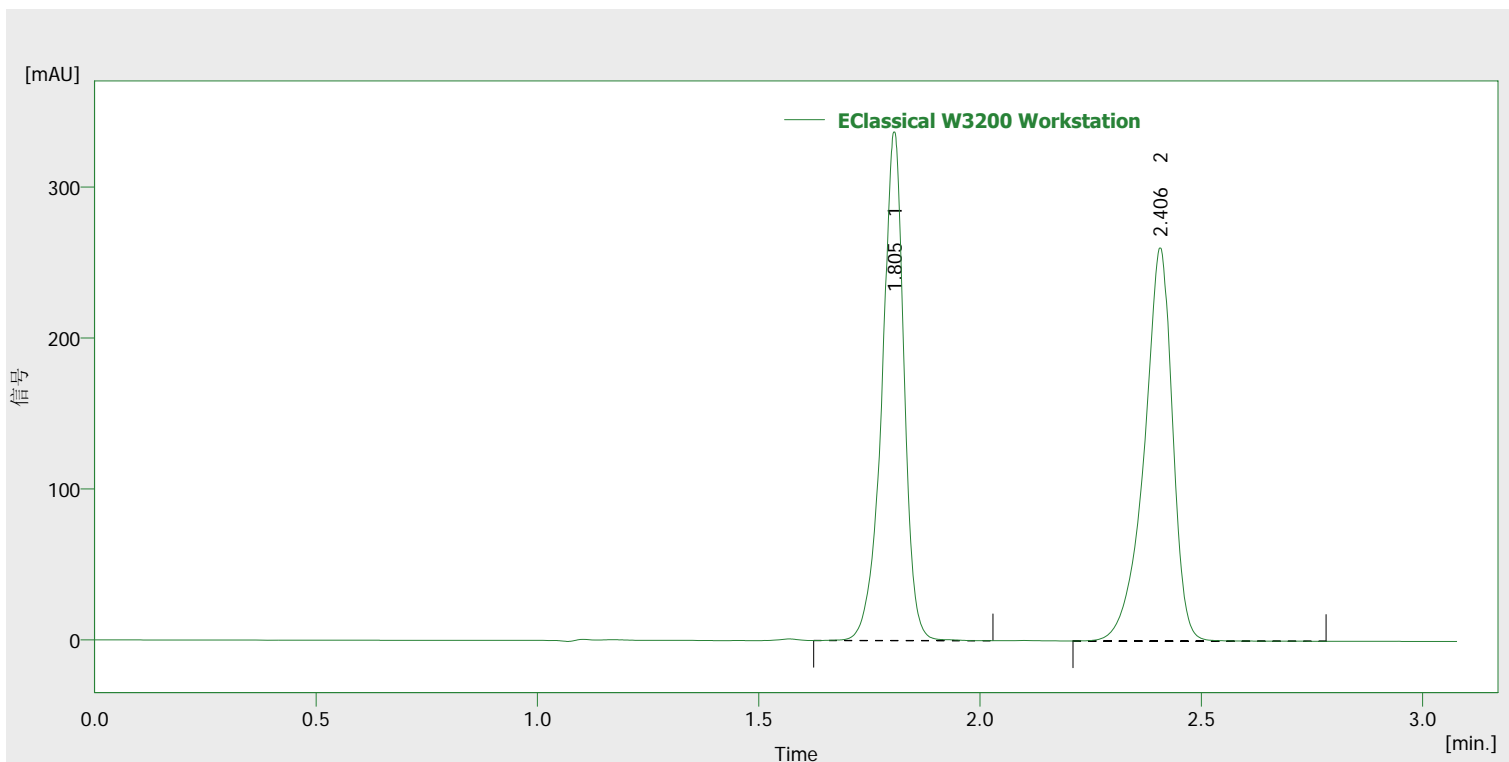


Column : 4.6*100 mm
 Mobile phase : 80/20/n-hexane/isopropanol
 Flow rate : 1.0 ml/min
 Compound : trans-Stilbene oxide

Detection wavelength : 220nm
 Temperature : 20°C
 Pressure : 5.2 MPa
 Injection : 2µl



Results (- EClassical W3200 Workstation - 2016-12-2 16_08_33 - Detector 1)

	Retention time [min]	Peak area [mAU.s]	Peak height [mAU]	Area [%]	Asymmetric factor [-]	Column efficiency [th.pl]
1	1.805	1167.459	336.885	50.1	0.814	6762
2	2.406	1162.178	260.274	49.9	0.719	7399
	Total	2329.637	597.159	100.0		