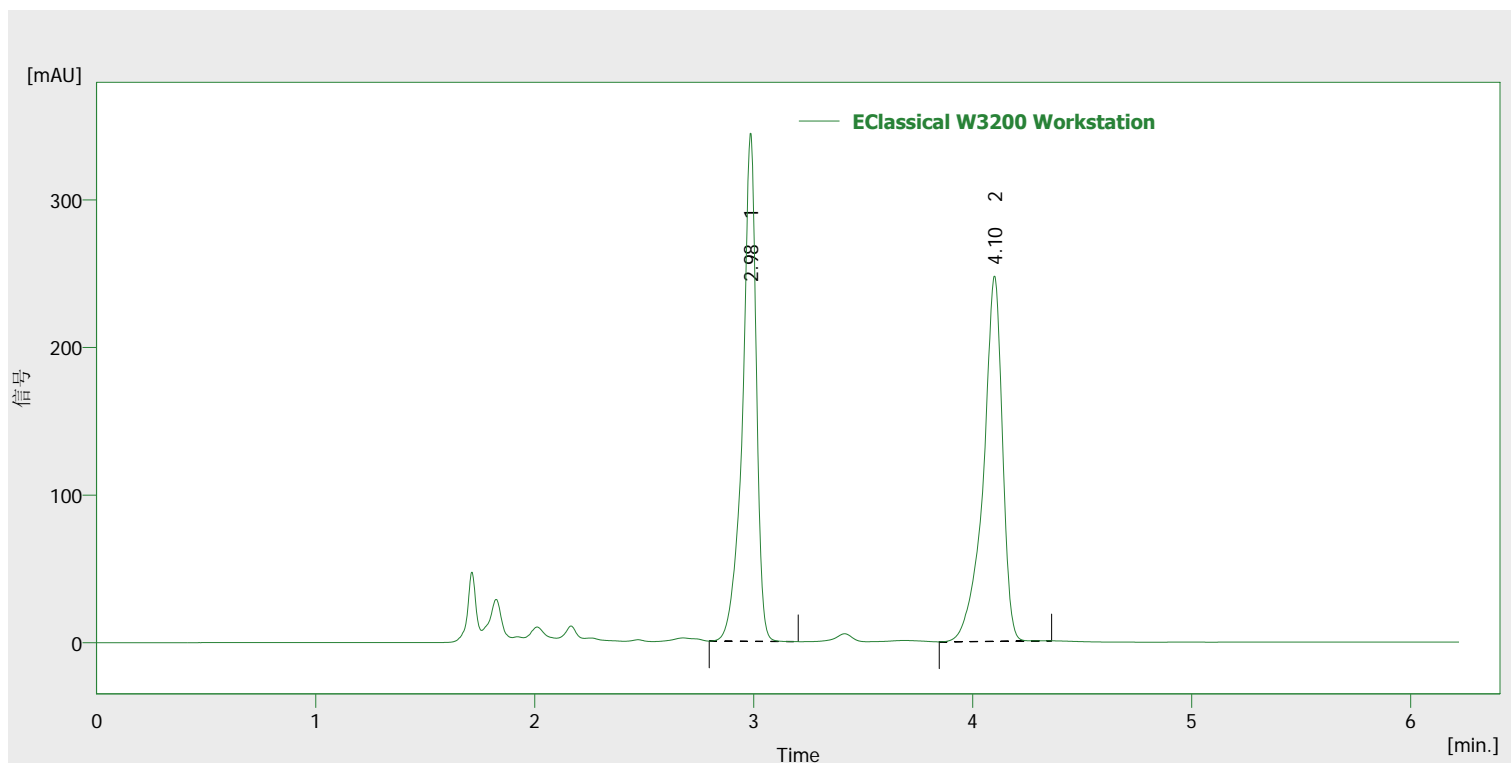


Column : 4.6*150 mm
 Mobile phase : 90/10/n-hexane/isopropano
 Flow rate : 1.0 ml/min
 Compound 反式-1,2-二氯乙烷
 反式-1,2-二氯乙烷氧化物

Detection wavelength : 220nm
 Temperature : 22°C
 Pressure : 2.7 MPa
 Injection : 2µl



Results (- EClassical W3200 Workstation - 2016-8-5 13_25_11 - Detector 1)

	Retention time [min]	Peak area [mAU.s]	Peak height [mAU]	Area [%]	Asymmetric factor [-]	Column efficiency [th.pl]
1	2.984	1494.020	344.187	50.0	0.663	12973
2	4.098	1496.226	247.336	50.0	0.627	12154
	Total	2990.246	591.523	100.0		