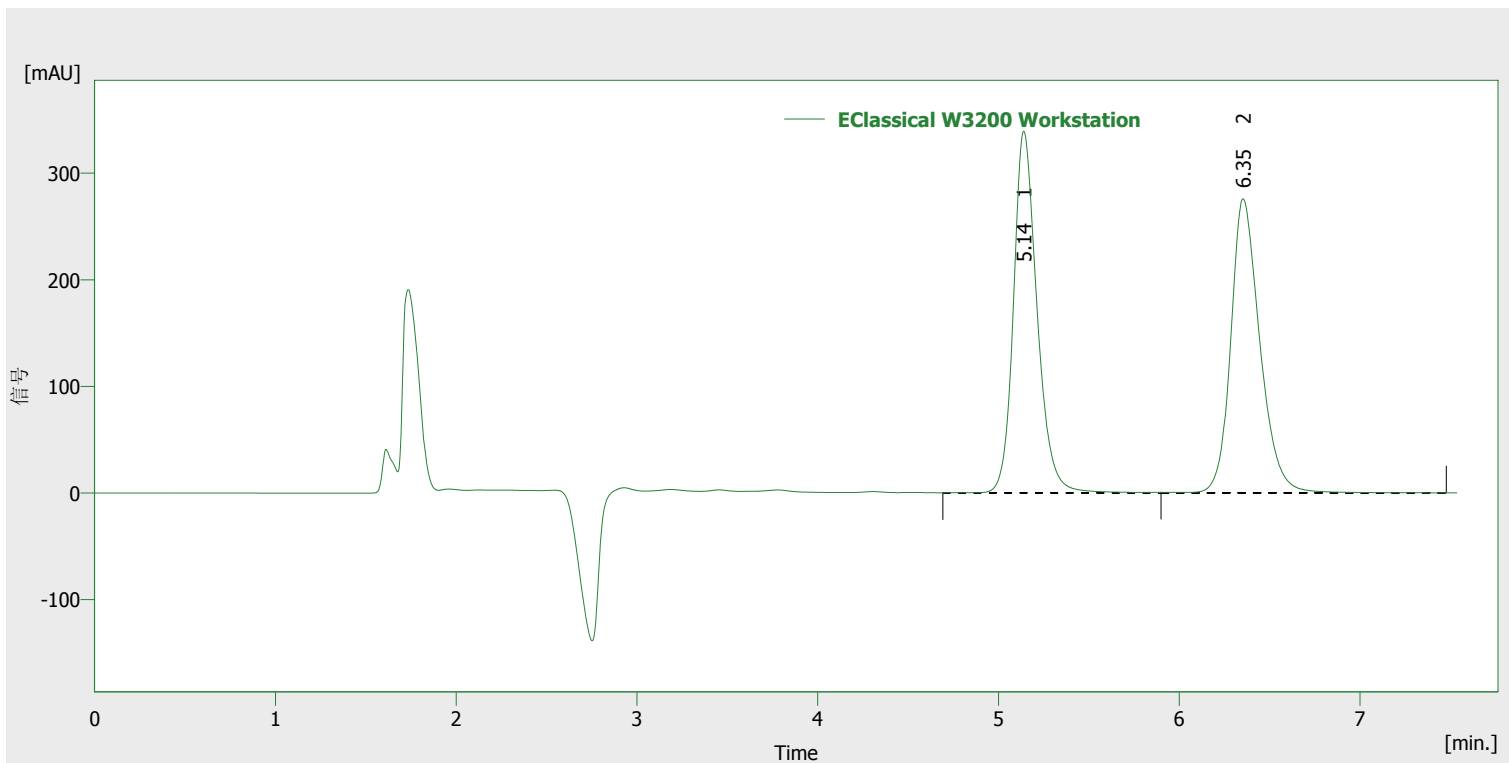


Column : 4.6*100 mm
 Mobile phase : 95/5/n-hexane/isopropanol
 Flow rate : 0.7 ml/min
 Compound : trans-Stilbene oxide

Detection wavelength : 220nm
 Temperature : 15°C
 Pressure : 2.0 MPa
 Injection : 2µl



Results (- EClassical W3200 Workstation - 2016-11-4 13_31_36 - Detector 1)

	Retention time [min]	Peak area [mAU.s]	Peak height [mAU]	Area [%]	Asymmetric factor [-]	Column efficiency [th.pl]
1	5.138	3070.528	338.946	49.9	1.429	8126
2	6.352	3080.710	275.591	50.1	1.478	8210
	Total	6151.238	614.537	100.0		